

**Location:**

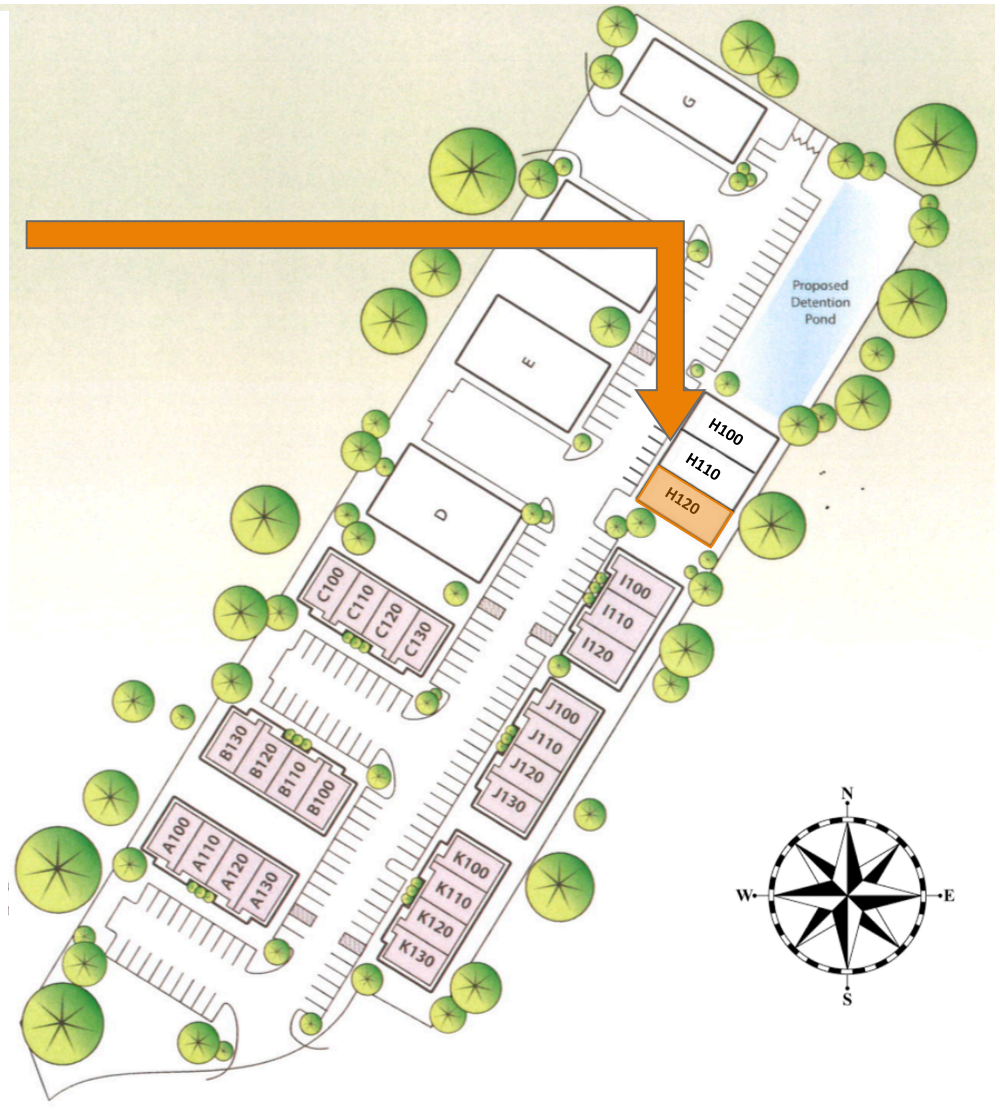
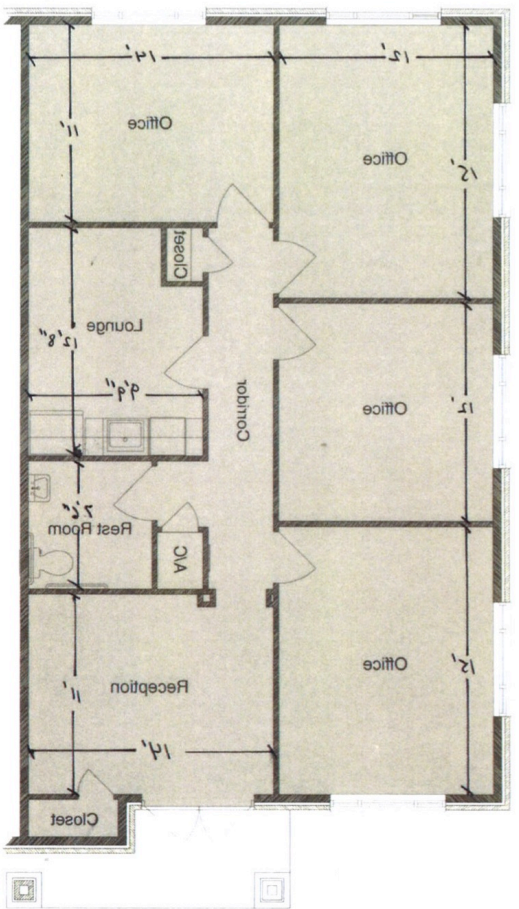
Bethany Ridge Office Park  
333 E. Bethany Drive  
Suite H120  
Allen, TX 75002



**Space Available:**

Fully Finished Out  
Professional Office Available  
1,225 SF

# Site & Floor Plan



The information contained herein was obtained from sources deemed reliable; however Legacy Commercial LLC. makes no guarantees, warranties or representations as to the completeness or accuracy thereof, the presentation of this real estate information is subject to errors: omissions; change of price; subject to prior sale or lease; or withdrawal without notice.

FOR MORE INFORMATION CONTACT

O: 972.292.1220

Joe Martinez C: 214.535.1876 / Tonya La Barbera C: 469.323.2615

Martinez@LCRTexas.com / Tonya@LCRTexas.com