

**Location:**

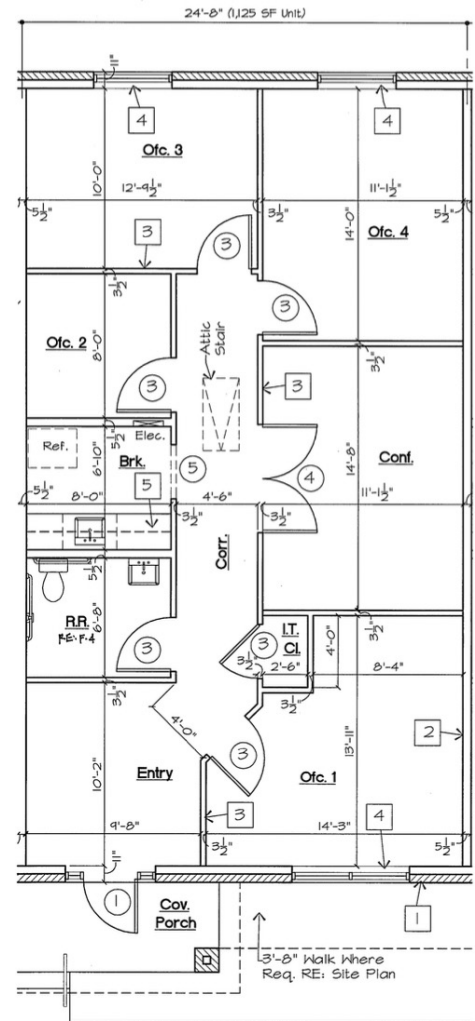
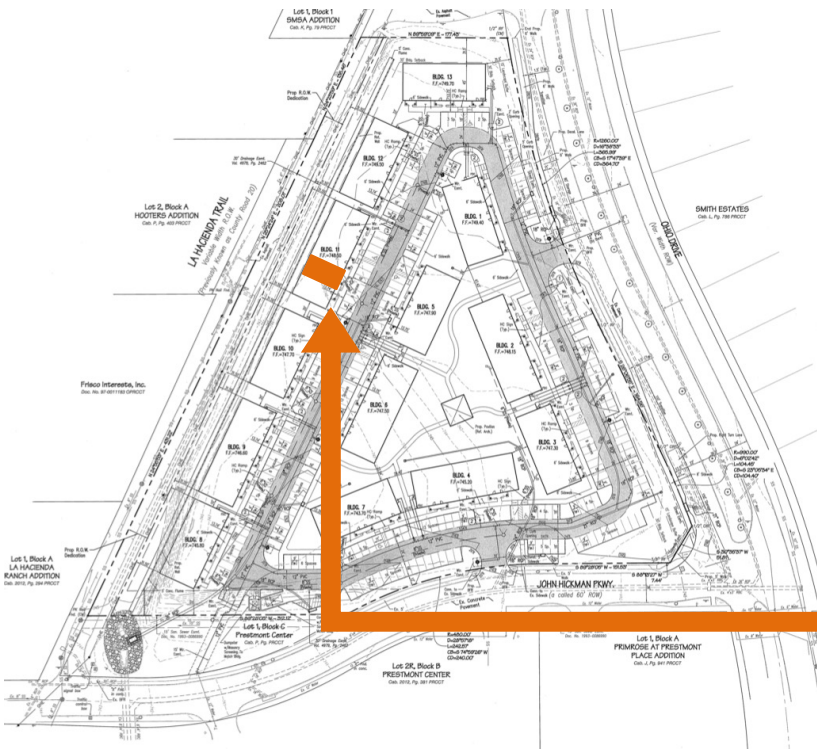
Frisco Highlands Office Park  
9300 John Hickman Pkwy  
Suite 1102  
Frisco, Texas 75035



**Space Available:**

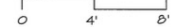
Fully Finished Out  
Professional Office Space  
Available  
1,125 SF

# Site & Floor Plan



**1,125 S.F. Unit - B Building, Interior Location**

Scale: 1/4" = 1'-0"



The information contained herein was obtained from sources deemed reliable; however Legacy Commercial LLC. makes no guarantees, warranties or representations as to the completeness or accuracy thereof, the presentation of this real estate information is subject to errors: omissions; change of price; subject to prior sale or lease; or withdrawal without notice.

FOR MORE INFORMATION CONTACT  
O: 972.292.1220 / [www.LCRTEXAS.com](http://www.LCRTEXAS.com)  
Joe Martinez C: 214.535.1876 / Tito Martinez 972.533.3621  
[Martinez@LCRTexas.com](mailto:Martinez@LCRTexas.com) / [Tito@LCRTexas.com](mailto:Tito@LCRTexas.com)