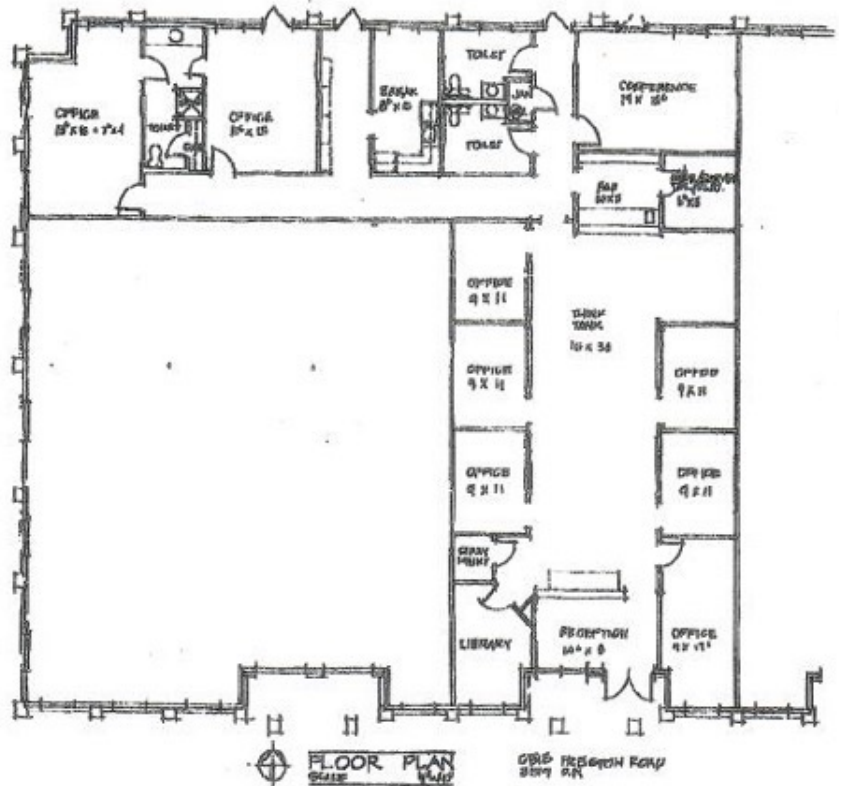
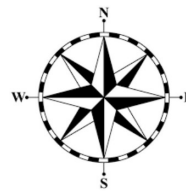
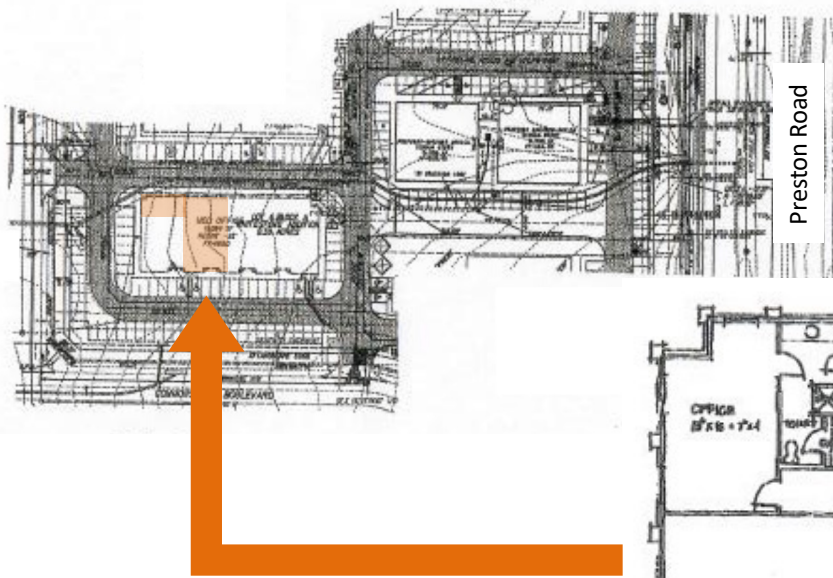


**Location:**  
 Preston Whitestone Office Park  
 6513 Preston Road,  
 Suite 200  
 Plano, Texas 75024



**Space Available:**  
 Fully Finished Out  
 Professional Office Available  
 3,475 SF

# Site & Floor Plan



The information contained herein was obtained from sources deemed reliable; however Legacy Commercial LLC. makes no guarantees, warranties or representations as to the completeness or accuracy thereof, the presentation of this real estate information is subject to errors: omissions; change of price; subject to prior sale or lease; or withdrawal without notice.

FOR MORE INFORMATION CONTACT  
 O: 972.292.1220 / [www.LCRTEXAS.com](http://www.LCRTEXAS.com)  
 Joe Martinez C: 214.535.1876 / Tito Martinez 972.533.3621  
[Martinez@LCRTexas.com](mailto:Martinez@LCRTexas.com) / [Tito@LCRTexas.com](mailto:Tito@LCRTexas.com)