

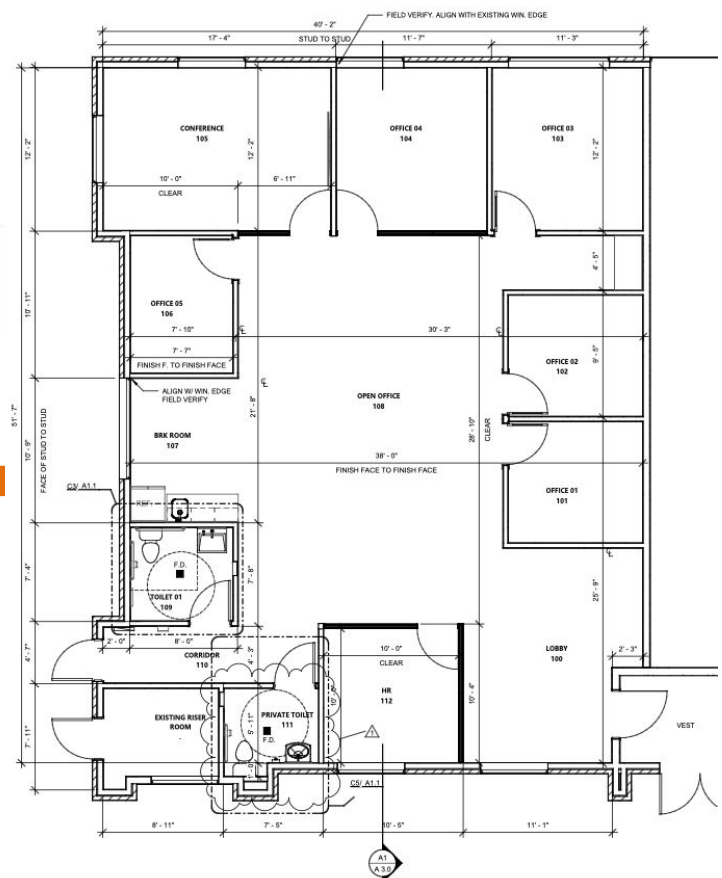
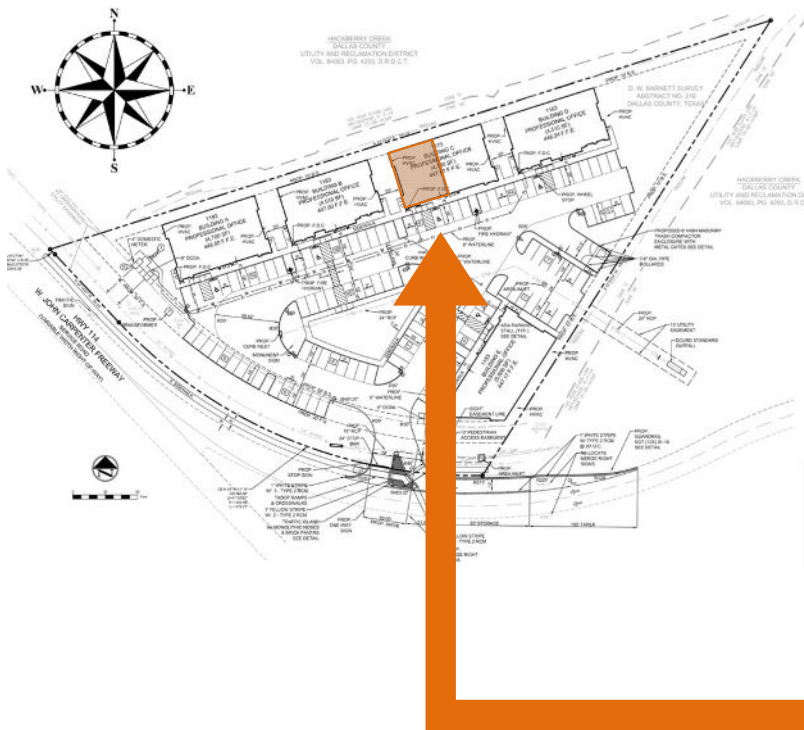
Location:

Canal Pointe Office Park
1173 W. John Carpenter Fwy
Suite 100
Irving, TX 75039

**Space Available:**

Fully Finished Out
Professional Office Available
2,200 RSF

Site / Floor Plan



A1 FLOOR PLAN-DIMENSION
A1.1 1/4" = 1'-0"

The information contained herein was obtained from sources deemed reliable; however Legacy Commercial LLC. makes no guarantees, warranties or representations as to the completeness or accuracy thereof, the presentation of this real estate information is subject to errors: omissions; change of price; subject to prior sale or lease; or withdrawal without notice.

FOR MORE INFORMATION CONTACT

O: 972.292.1220 / www.LCRTexas.com

Joe Martinez C: 214.535.1876 / Tito Martinez 972.533.3621

Martinez@LCRTexas.com / Tito@LCRTexas.com