

**Location:**

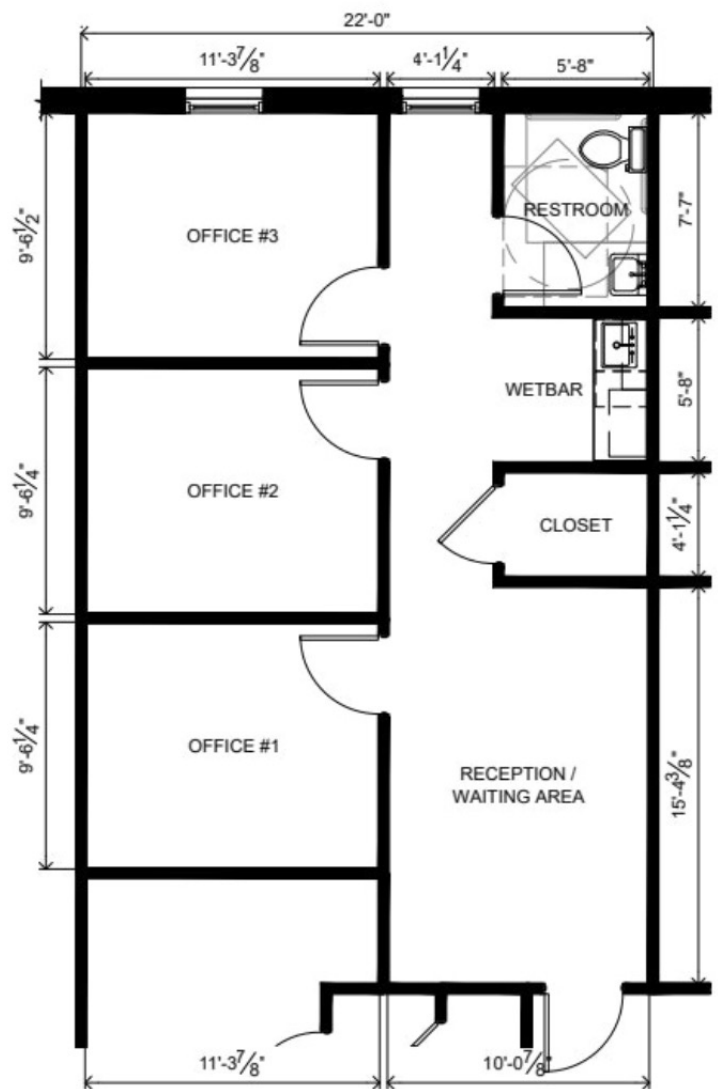
Frontier Pkwy Professional  
Park  
560 W. Frontier Pkwy  
Suite 125  
Prosper, TX 75078



**Space Available:**

Fully Finished  
Professional Office Available  
752 SF

# Site & Floor Plan



The information contained herein was obtained from sources deemed reliable; however Legacy Commercial LLC. makes no guarantees, warranties or representations as to the completeness or accuracy thereof, the presentation of this real estate information is subject to errors: omissions; change of price; subject to prior sale or lease; or withdrawal without notice.

FOR MORE INFORMATION CONTACT

O: 972.292.1220 / [www.LCRTEXAS.com](http://www.LCRTEXAS.com)

Joe Martinez C: 214.535.1876 / Tito Martinez 972.533.3621

[Martinez@LCRTexas.com](mailto:Martinez@LCRTexas.com) / [Tito@LCRTexas.com](mailto:Tito@LCRTexas.com)